

Product ID:
RGR1

Product Name:
Rescue Tripod



The RGR1 Rescue Tripod is portable, lightweight and is easy to erect on site.

It has adjustable lower and middle legs at 80mm intervals to adapt and adjust to the most demanding surfaces and varying ground conditions. There are two additional anchorage points (SWL 200kg) on the underside of the head for additional primary/secondary systems. This unit has many applications such as confined access, entry, rescue, retrieval, manhole, silos & trenches, etc. Extremely versatile and is recommended for use with the side attachment of the RGR7 rescue winch and the RGR4 fall arrest and rescue recovery winch.

Accredited to:
EN 795:2012 Type B

Material:
Aluminium cast and extruded legs

Fittings:
EN 795 attachment points

Weight:
17.5kg

Min - Max Height:

1.7 - 2.7m

Packed length:

1.4m

Footprint span:

1 - 1.8m

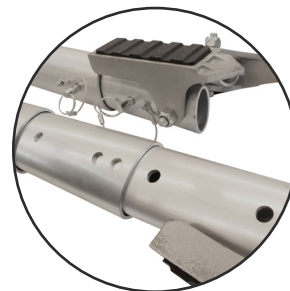
SWL:

200kg

Features:



Portable (flat packed)



Universally adjustable



Q05822

Leg span diagram:

